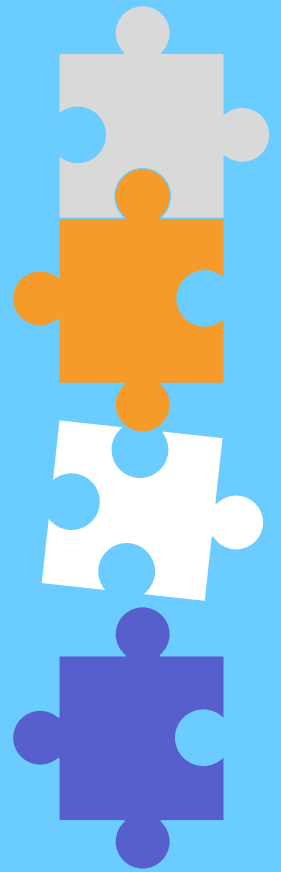


# Understanding Your Per Capita Giving

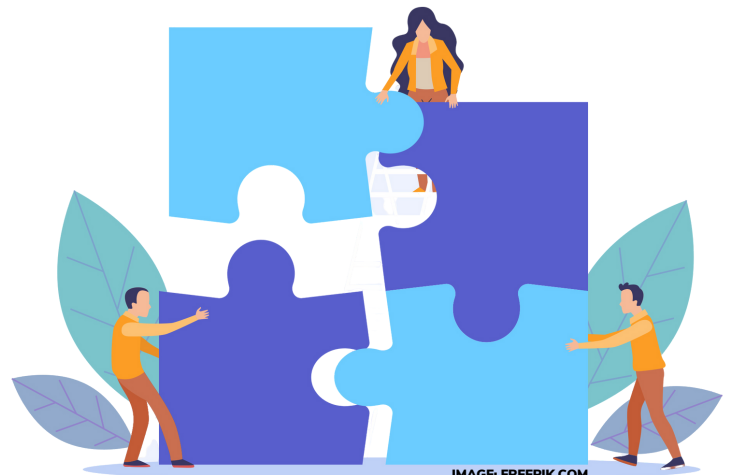
Per capita exists as a way for all Presbyterians to share costs that belong to the whole church. Members share equitably the costs required to connect and coordinate over 8000+ congregations together into one larger body so we can further the mission of Jesus Christ around the world.

Per Capita is the main source of funding used to provide support for the local churches across the presbytery.



## 2023 Per Capita Breakdown

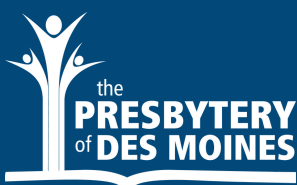
- GA \$9.85
  - Synod \$5.50
  - Presby \$31.65
- \$47.00 per member



“It's like everyone chipping in for gas when we're all on a trip together in the same vehicle.”

“Per capita is like everyone contributing a dish to the potluck meal.”

The Presbytery of Des Moines pays 100% of each member's Per Capita share to the General Assembly and Synod, which is one of the ways we participate in the unity and interdependence of the body of Christ, the church.



319.233.1747  
office@presbyteries.org  
<https://dmpresbytery.org/>

Thank you for your continued participation in the larger ministry of God's church!