



## Presbytery of Des Moines

---

REV. PHILIP W. BARRETT, GENERAL PRESBYTER & STATED CLERK  
E-MAIL: [PBY1@PRESBYTERYOFDESMOINES.ORG](mailto:PBY1@PRESBYTERYOFDESMOINES.ORG)

October 27, 2011

### CALL TO THE 486<sup>TH</sup> STATED MEETING

The 486<sup>th</sup> Stated Meeting of the Presbytery of Des Moines will be held on Tuesday, November 8, 2011 at the First Presbyterian Church, 405 High Ave. E., Oskaloosa, Iowa. Directions and a map are included in this packet.

Registration will begin at 8:30 a.m. and the meeting will convene at 9:30 a.m. **Please do not plan to arrive earlier than 8:30.** Those setting up and preparing refreshments will not be ready prior to that time.

Enclosed you will find the *Proposed Docket*, along with items for information and action. Please bring these to the meeting. We only have a limited amount of extras and these are intended for visitors.

As you look at the schedule you will see that it is a bit shorter than usual. However, there are several important reports coming from the Nominating Committee, Budget and Finance Committee, and the Committee on Preparation for Ministry.

We will also recognize our Outstanding Older Adults and hear from Dubuque Seminary.

We will handle much of our business through the use of a “consent agenda” process. This means that, in one action, we handle votes to approve or adopt actions or recommendations that do not require debate or conversation. We only include items from the call to this meeting in the consent agenda.

The *Minutes of the August 20 Stated Meeting* were sent out October 18. Please remember to bring these to the meeting. You can download them for printing by going online to [www.presbyteryofdesmoines.org](http://www.presbyteryofdesmoines.org). Again, extra copies are at a minimum.

A special treat for us is that the Rev. Mark Davis, Pastor of the Heartland Church in Clive, will have copies of his latest book available for purchase and signing at our meeting.

**Meeting format:** Under our structure and style of operating in our presbytery, meetings do not have business as the central focus and purpose for our gathering. Worship, dialogue and fellowship are primary reasons for meeting. It will help our meeting to be carried on in this spirit if members and commissioners come expecting such a spirit to be present.

Each commissioner and minister member is expected to be present for the entire meeting. Late arrivals and early leavings, where avoidable, are discourteous to those making presentations and rob others of the opportunity to share in work and ministry with those not present.

**Participation guidelines:** We are sometimes asked who may participate in discussions during a meeting. You will find *Guidelines for Participation in Presbytery Meetings* included in this packet. We hope it will help answer these questions.

**Child Care:** If you need child care for your children you should call the First Presbyterian Church of Oskaloosa by Noon on Friday, November 4 to let them know, 641-673-8879. You should bring a bagged meal for your child. Milk will be provided.

**A/V Equipment:** The church has a LCD projector and screen for use in the sanctuary. The Presbytery has available for use an LCD projector and a laptop computer. **If you need A/V equipment of any kind, contact the presbytery Office immediately to reserve the equipment for your presentation.**

Our registration process requires **all** attendees to sign in. **A reminder:** Congregations are not excused from having a ruling elder in attendance. If extra visitors are planning to attend, they must register through the Presbytery Office. Otherwise, there will not be a meal provided for them.

In case of bad weather, call the Presbytery Office, 515-276-4991, for information about any changes in time or date.

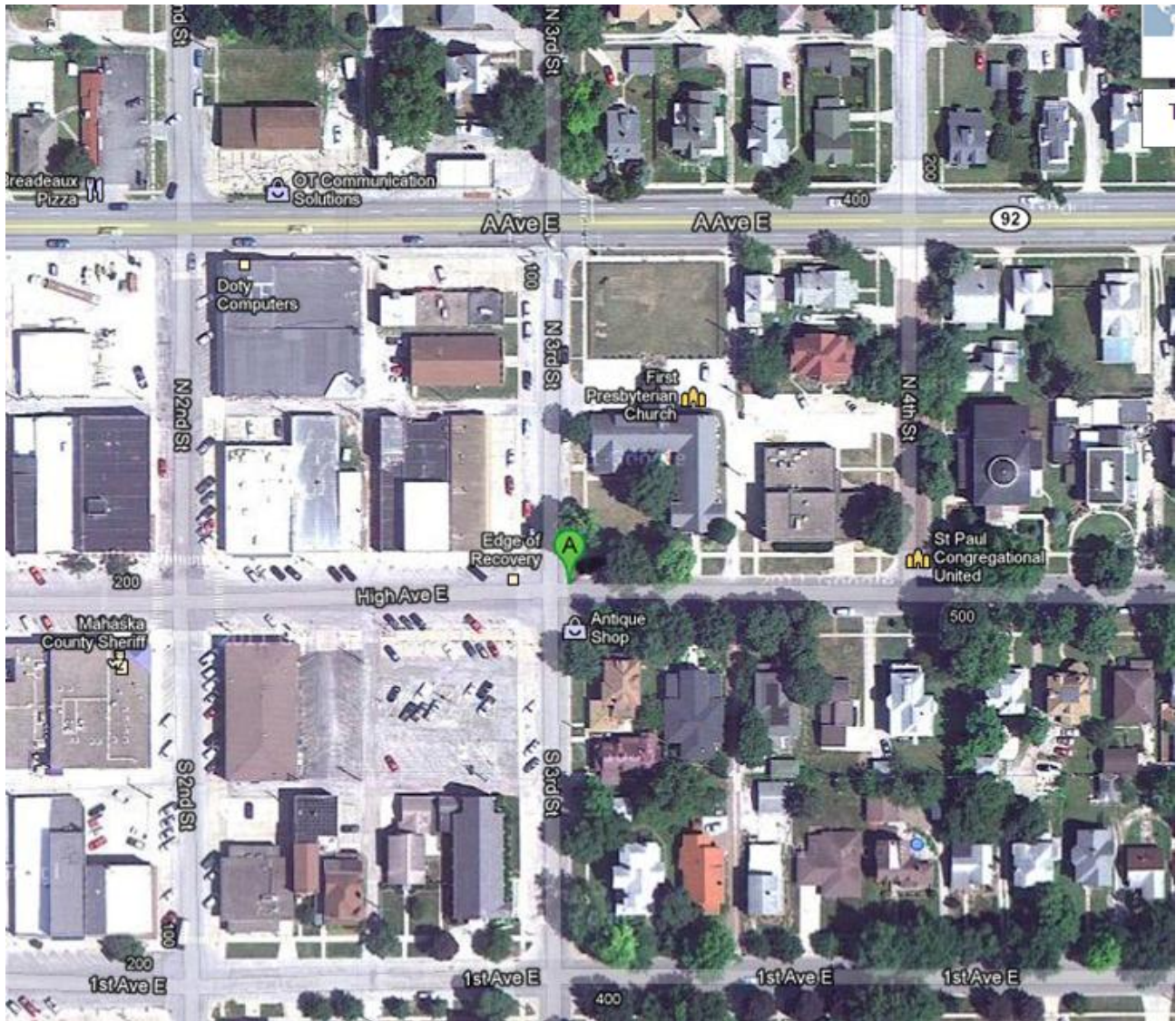
I look forward to being with all of you for this special time together on November 8.



Philip W. Barrett, Stated Clerk

Enclosures

**A REMINDER: November 8 is Election Day. Make your travel plans or absentee voting plans accordingly.**

**Map to First Presbyterian Church in Oskaloosa, Iowa:**

**Driving Directions:** The First Presbyterian Church is located at 405 High Ave., E., and is on the north side of the street.

- **From the West or East:** Enter Oskaloosa on Hwy 92. Turn south on N. 3<sup>rd</sup> St. The church will be on your left.
- **From the North or South:** Enter Oskaloosa on Hwy 63. Turn east on Hwy 92. Turn south on N. 3<sup>rd</sup> St. The church will be on your left.

**Parking:** Parking is available in the lot and on the street.

**Building Accessibility:** The church is handicapped accessible. Use the north entrance for a chair lift to the sanctuary, or use the west door and follow the handicap ramp to the sanctuary. Fellowship Hall is on the ground floor.

## **GUIDELINES FOR PARTICIPATION IN PRESBYTERY MEETINGS**

Meetings of our Presbytery are always special because it is a time for the Presbytery family to gather for conversations, business and fellowship. Many different people come to a Presbytery meeting for many different reasons.

When our Presbytery meets, we welcome and encourage participation. There are times, however, that participation is limited. Those times are ordinarily when our Presbytery is conducting its formal business. Because our Presbyterian structure calls for elected Commissioners to determine direction and act on business, only those who are elected Commissioners or are members of our Presbytery are allowed to participate in discussions or voting. Visitors and guests become observers of the process at that time.

At other times in our meetings, each person present is invited to participate in dialogues, conversations, or other activities. Such times include worship, special thematic presentations and small group discussions.

If you are not sure when you may participate in what is happening in the meeting, please talk to the Moderator or Stated Clerk individually.

**PARLIAMENTARY PROCEDURES AT-A-GLANCE**

TO DO THIS	YOU SAY THIS:	MAY YOU INTERRUPT SPEAKER?	MUST YOU BE SECONDED?	IS THE MOTION DEBATABLE?	IS THE MOTION AMENDABLE?	WHAT VOTE IS REQUIRED?
Adjourn the meeting	"I move that we adjourn."	May not interrupt speaker	Must be seconded	Not debatable	Not amendable	Majority vote required
Recess the meeting	"I move that we recess until..."	May not interrupt speaker	Must be seconded	Not debatable	Amendable	Majority vote required
Complain about noise, room temp, etc.	"Point of privilege."	May interrupt speaker	No second needed	Not debatable	Not amendable	No vote required <sup>3</sup>
Suspend further consideration of something	"I move we table it."	May not interrupt speaker	Must be seconded	Not Debatable	Not amendable	Majority vote required
End debate	"I move the previous question."	May not interrupt speaker	Must be seconded	Not Debatable	Not amendable	Two-thirds vote required
Postpone consideration of something	"I move we postpone this matter until..."	May not interrupt speaker	Must be seconded	Debatable	Amendable	Majority vote required
Have something studied further	"I move we refer this matter to a committee."	May not interrupt speaker	Must be seconded	Debatable	Amendable	Majority vote required
Amend a motion	"I move that this motion be amended by..."	May not interrupt speaker	Must be seconded	Debatable	Amendable	Majority vote required
Introduce business (a primary motion)	"I move that..."	May not interrupt speaker	Must be seconded	Debatable	Amendable	Majority vote required
<sup>1</sup> The motions or points above are listed in established order or precedence. When any one of them is pending, you may not introduce another that is listed below it. But you may introduce another that is listed above it. <sup>2</sup> In this case, any resulting motion is debatable. <sup>3</sup> Chair decides						
Object to procedure or to a personal affront	"Point of order."	May interrupt speaker	No second needed	Not debatable	Not amendable	No vote required, chair decides
Request information	"Point of information."	If urgent, may interrupt speaker	No second needed	Not debatable	Not amendable	No vote required
Ask for a vote by actual count to verify a voice vote	"I call for a division."	May not interrupt speaker <sup>2</sup>	No second needed	Not debatable	Not amendable	No vote required unless someone objects <sup>3</sup>
Object to considering some undiplomatic or improper matter	"I object to consideration of this question."	May interrupt speaker	No second needed	Not debatable	Not amendable	Two-thirds vote required
Take up a matter previously tabled	"I move we take from the table..."	May not interrupt speaker	Must be seconded	Not debatable	Not amendable	Majority vote required
Reconsider something already disposed of	"I move we now (or later) reconsider our action relative to..."	May interrupt speaker	Must be seconded	Debatable if original motion is debatable	Not amendable	Majority vote required
Consider something out of its scheduled order	"I move we suspend the rules and consider..."	May not interrupt speaker	Must be seconded	Not debatable	Not amendable	Two-thirds vote required
Vote on a ruling by the chair	"I appeal the chair's decision."	May interrupt speaker	Must be seconded	Debatable	Not amendable	Majority vote required
<sup>1</sup> The motion, points, and proposals listed above have no established order of precedence. Any of them may be introduced at any time – except when the meeting is considering one of the top three matters listed in the above chart (motion to adjourn, motion to recess, point of privilege). <sup>2</sup> But division must be called for before another motion is stated. <sup>3</sup> Then majority vote is required.						

Compiled by the Houston, Texas Chronicle – Used with permission

**PROPOSED DOCKET****November 8, 2011**

8:30 a.m.	Registration Begins Fellowship and Refreshments	
	Orientation of “First Timers”	Leland Smith
	Budget Orientation	Pat Aksamit
9:30	Convene Presbytery I – Report of the Stated Clerk	Leland Smith Phil Barrett
10:00	Worship	
11:00	Greetings from the University of Dubuque Theological Seminary	Peggy Sell
11:10	D – Budget and Finance Committee	Pat Aksamit
11:20	F – Nominating Committee	Ray Peters
11:30	T-4 – Older Adult Ministry Task Force	Darlene Shepherd
Noon	Lunch	
1:00 p.m.	Announcements	
1:10	Presentation from Lee Insurance	Angie Sink
1:20	K – Social Ministries Task Force	Nancy Lister-Settle
1:40	A – Congregational Care and Development Committee	Sarai Schnucker Rice
1:55	C – Committee on Preparation for Ministry	Ann Johnson
2:10	J – General Presbyter Report	Phil Barrett
2:20	Other Business	
2:35	Adjourn	

## **CONSENT AGENDA**

**November 8, 2011**

### **A – Congregational Care and Development Committee**

A-A-23

### **D – Budget and Finance Committee**

D-A-3

D-I-4            September 30, 2011 Income Report

September 30, 2011 Expense Report

September 30, 2011 Restricted Funds

September 30, 2011 Consolidated Statement of Financial Position Report

### **I – Stated Clerk’s Report**

I-I-15            Reports Filed and Correspondence Handled

I-R-8            Hosts for Presbytery Meetings

## **A – CONGREGATIONAL CARE AND DEVELOPMENT COMMITTEE**

**November 8, 2011**

The Committee will be bringing two recommendations from its November 1<sup>st</sup> meeting regarding the Clifton Heights Presbyterian Church of Des Moines. One will deal with the dissolution of the Clifton Heights Church. The other will deal with the appointment of an administration commission to handle the details of the closing.

Respectfully Submitted,  
Sarai Schnucker Rice, Moderator



## **C – COMMITTEE ON PREPARATION FOR MINISTRY**

**November 8, 2011**

The Committee presents the following recommendation to the Presbytery for action:

C-R-2 That Patti Spencer Burdette, an Inquirer from the Fort Des Moines Presbyterian Church of Des Moines, be enrolled as a Candidate under the care of this Presbytery.

Respectfully Submitted,  
Ann Johnson, Moderator

## **Statement of Faith**

### **Patti Spencer Burdette**

I believe God created all of heaven and earth including humanity who God calls to be the children of God, male and female, made in God's image, connected to God by God's love, separated from God by sin and evil, to love, honor, glorify, worship and obey God, to be in covenant with God and mutually delighting in each other.

I believe God reveals God's self to God's children as the one true God, first person of the Trinity, three equal and interdependent persons, Father, Son and Holy Spirit, always existing as the same one in three, Creator, Redeemer and Sustaining Advocate, revealing God's nature and attributes of grace, trustworthiness, loyalty, guidance, patience, mercy and love, providence and works, salvation, listening to and answering prayer, staying active in the lives of God's children.

I believe Jesus Christ is God's only Son, second person of the Trinity, equal to God in substance and power, fully human and fully God, role model for all believers, born of a virgin woman overshadowed by God's Spirit, becoming flesh, living as a man, willingly submitting to the glory and will of the Father, shedding blood to cleanse away human sin, Savior of the World, dying on a cross, rising again in victory over death on the third day, God with us, eyes, ears, heart, mind and soul allowing the Creator to experience Creation, first heir to God accepting all who do His Father's will as brothers and sisters,.

I believe the Holy Spirit is the third equal person of the Trinity who is Advocate and Wisdom, present, active and powerful in Creation, present at the baptism of Lord Jesus, sharing in God's testimony to God's Son, comforting teacher, counselor and advisor, who continued Her mission among the children of God at Pentecost, who continues Her mission today in response to every faithful request for companionship, empowering and assistance, giver of fruits and gifts for the encouragement of the community overall, who empowers believers to do all manners of amazing things in the name of the God of Jesus Christ.

I believe the Holy Bible is the Word of God, revealing God and God's attributes to God's children, God's love and mercy even in the face of human disobedience, God's desire for relationship, covenant, communication with God's children, God's forgiveness, bestowing personal authority and freedom so all humanity may approach God for every worldly and spiritual need, inspired by God, written by humanity, infallible.

I believe salvation comes from God through the life, death and new life of Jesus Christ, beginning with hearing the Word of God, the Gospel of Jesus Christ, experiencing the work of the Holy Spirit, confidently believing in God's many promises.

I believe the Sacraments of Holy Baptism and Holy Communion are God's gifts to God's children, blendings of the visible and the invisible, mergers of the common place and the supernatural, meetings of the children of God and the heavenly host, rituals of confession and living witnesses, a recipe of Word, faith and water, a recipe of bread, wine, and remembrance, two divine confections resulting in God's Church.

## **D – BUDGET AND FINANCE COMMITTEE REPORT**

**November 8, 2011**

The Committee presents the following recommendation to the Presbytery:

D-R-2 That the Proposed Expense Budget for 2012 be approved.

D-R-3 That the Per Capita Assessment for 2012 be set at \$34.00 per member. This is an increase of \$2.00 from 2011. (GA - \$6.63, Synod - \$5.00, Presbytery - \$22.37)

Respectfully Submitted,  
Pat Aksamit, Moderator

**D – BUDGET AND FINANCE COMMITTEE REPORT continued...****Presbytery of Des Moines****2012 Proposed Expense Budget**

	2011 Budget	2012 Proposed
<b>Governance Expense</b>		
Committee Preparation Ministry	\$2,100.00	\$1,800.00
Stewardship & Mission Interpretation Committee	\$2,100.00	\$2,100.00
Permanent Judicial Commission	\$500.00	\$500.00
Committee of Representation	\$0.00	\$0.00
Budget & Finance Committee	\$0.00	\$100.00
Nominating Committee	\$90.00	\$100.00
Personnel Committee	\$75.00	\$100.00
Sexual Misconduct Response Team	\$50.00	\$50.00
General Assembly Per Capita	\$56,329.00	\$55,552.77
Synod Per Capita	\$42,463.40	\$41,895.00
<b>Subtotal</b>	<b>\$103,707.40</b>	<b>\$102,197.77</b>
<b>Administrative Expense</b>		
Moderator Expense/Task Groups	\$150.00	\$150.00
Administrative Commissions/Investigative Commissions	\$200.00	\$500.00
Presbytery Meetings	\$400.00	\$300.00
Commissioner Orientation		\$100.00
Stated Clerk Expense	\$50.00	\$50.00
Insurance	\$5,500.00	\$5,500.00
Legal fees	\$500.00	\$500.00
<b>Subtotal</b>	<b>\$6,800.00</b>	<b>\$7,100.00</b>
<b>Extension of Ministries</b>		
Social Ministries Task Force	\$2,500.00	\$5,000.00
<del>El Salvador Mission Co-worker Benefits</del>	\$8,500.00	\$0.00
Hunger Action Enabler Travel & Con Ed	\$1,000.00	\$1,500.00
Broken Bread	\$500.00	\$360.00
Khadamat Sudaniya Committee Expense	\$50.00	\$50.00
Khadamat Sudaniya Grant Expense	\$33,000.00	\$30,000.00
Cross Ministries	\$56,700.00	\$56,700.00
Older Adult Ministries Task Force	\$800.00	\$1,000.00
Camping	\$2,500.00	\$4,500.00
Youth	\$1,000.00	\$800.00
Resources	\$500.00	\$500.00
Women's Advocacy Task Force	\$50.00	\$50.00
<b>Subtotal</b>	<b>\$107,100.00</b>	<b>\$100,460.00</b>

**D – BUDGET AND FINANCE COMMITTEE REPORT continued...**

<b>Support of Local Ministries</b>		
Congregational Care & Development Committee	\$1,000.00	\$1,000.00
Professional Care & Development Committee	\$3,000.00	\$3,300.00
<u>Regional Partnerships</u>		
Southeast	\$0.00	\$0.00
East	\$0.00	\$0.00
DM West/NW	\$0.00	\$0.00
Southwest	\$5,000.00	\$5,000.00
West	\$0.00	\$0.00
South Central	\$200.00	\$0.00
DM Two Rivers	\$4,500.00	\$4,500.00
Leadership Council	\$200.00	\$450.00
Worship Task Group	\$75.00	\$75.00
Bills & Overtures	\$50.00	\$50.00
Emergency Contingency	\$500.00	\$500.00
<b>Subtotal</b>	<b>\$14,525.00</b>	<b>\$14,875.00</b>
<b>Office Expense</b>		
Condo dues	\$2,405.00	\$2,400.00
Copier Expense	\$4,400.00	\$4,500.00
Office supplies	\$4,000.00	\$4,500.00
Postage	\$3,000.00	\$3,000.00
Telephone & Internet	\$4,000.00	\$4,000.00
Utilities	\$1,500.00	\$2,000.00
Janitorial Services	\$3,000.00	\$3,600.00
New Equipment	\$2,000.00	\$2,000.00
Equipment Maintenance	\$1,500.00	\$1,500.00
Books & Subscriptions	\$250.00	\$250.00
Office Travel	\$1,000.00	\$1,000.00
Audit	\$6,800.00	\$7,000.00
Continuing Ed-Support Staff	\$100.00	\$100.00
Church & Staff Appreciation	\$100.00	\$200.00
<b>Subtotal</b>	<b>\$34,055.00</b>	<b>\$36,050.00</b>
<b>Personnel</b>		
General Presbyter Salary	\$69,316.00	\$72,623.00
General Presbyter Benefits	\$21,817.00	\$23,421.00
General Presbyter Prof Expense	\$600.00	\$600.00
General Presbyter Con Ed	\$1,500.00	\$1,500.00
General Presbyter Travel	\$10,000.00	\$10,000.00
Office Manager Salary	\$33,448.00	\$34,470.00
Office Manager Benefits	\$10,522.00	\$11,117.00
Office Manager FICA	\$2,558.00	\$2,637.00
Communications Director Salary	\$29,056.00	\$29,905.00
Communications Director Benefits		\$7,452.00
Communications Director FICA	\$2,223.00	\$2,288.00
Communications Director Con Ed	\$1,500.00	\$1,500.00
Hunger Action Enabler Salary	\$5,500.00	\$6,500.00
Hunger Action Enabler FICA	\$400.00	\$497.00
Sudanese Ministry RP Salary	\$22,056.00	\$24,590.00
Sudanese Ministry RP Benefits	\$6,892.00	\$10,646.00
Sudanese Ministry RP Con Ed	\$750.00	\$750.00
Sudanese Ministry RP Expenses	\$3,000.00	\$3,000.00
<b>Subtotal</b>	<b>\$221,138.00</b>	<b>\$243,496.00</b>
<b>Total Expenses</b>	<b>\$487,325.40</b>	<b>\$504,178.77</b>

**D – BUDGET AND FINANCE COMMITTEE REPORT continued...****Presbytery of Des Moines****Income Report  
as of September 30, 2011**

	2011 Budget	Year to Date
<b>Income</b>		
Escrow Fund	\$6,722.96	\$6,722.96
Total Per Capita	\$255,000.00	\$226,275.21
Total Past Years Per Capita	\$22,307.55	\$5,913.54
Presbytery General Mission	\$133,868.89	\$85,626.09
Synod Support Staff Salaries	\$40,000.00	\$29,999.97
Hunger Action Enabler Income	\$2,000.00	\$2,000.00
Khadamat Sudaniya Grant Income	\$33,000.00	\$20,999.97
Interest Income	\$150.00	\$128.43
Miscellaneous Income	\$150.00	\$57.94
<b>Total Income</b>	<b>\$493,199.40</b>	<b>\$377,724.11</b>
<b>2011 Proposed Expenses</b>	<b>\$493,199.40</b>	<b>\$343,571.62</b>
<b>Surplus(Deficit)</b>	<b>\$0.00</b>	<b>\$34,152.49</b>

**D – BUDGET AND FINANCE COMMITTEE REPORT continued...****Presbytery of Des Moines****Expense Report  
as of September 30, 2011**

<b>Governance Expense</b>	<b>2011 Budget</b>	<b>Year to Date</b>
Committee Preparation Ministry	\$2,100.00	\$605.00
Stewardship & Mission Interpretation Committee	\$2,100.00	\$1,252.38
Permanent Judicial Commission	\$500.00	\$0.00
Committee on Representation	\$0.00	\$0.00
Budget & Finance Committee	\$0.00	\$0.00
Nominating Committee	\$90.00	\$0.00
Personnel Committee	\$75.00	\$0.00
Sexual Misconduct Response Team	\$50.00	\$0.00
General Assembly Per Capita	\$56,329.00	\$56,329.00
Synod Per Capita	\$42,463.40	\$42,463.40
<b>Subtotal</b>	<b>\$103,707.40</b>	<b>\$100,649.78</b>
<b>Administrative Expense</b>		
Moderator Expense/Task Groups	\$150.00	\$665.42
Administrative Commissions	\$200.00	\$0.00
Presbytery Meetings	\$400.00	\$0.00
Commissioner Orientation	\$0.00	\$0.00
Stated Clerk Expense	\$50.00	\$0.00
Communication	\$1,500.00	\$985.70
Insurance	\$5,500.00	(\$1,027.50)
Legal fees	\$500.00	\$0.00
<b>Subtotal</b>	<b>\$8,300.00</b>	<b>\$623.62</b>
<b>Extension of Ministries</b>		
Social Ministries Task Force	\$2,500.00	\$1,127.37
El Salvador Mission Co-worker Benefits	\$8,500.00	\$5,814.00
Hunger Action Enabler Travel	\$1,000.00	\$999.23
Broken Bread	\$500.00	\$178.15
Khadamat Sudaniya Committee Expense	\$50.00	\$0.00
Khadamat Sudaniya Grant Expense	\$33,000.00	\$18,666.64
Cross Ministries	\$56,700.00	\$42,525.00
Older Adult Ministries Task Force	\$800.00	\$469.60
Camping	\$2,500.00	(\$13,274.70)
Youth	\$1,000.00	\$30.00
Resources	\$500.00	\$841.59
Women's Advocacy Task Force	\$50.00	\$0.00
<b>Subtotal</b>	<b>\$107,100.00</b>	<b>\$57,376.88</b>

**D – BUDGET AND FINANCE COMMITTEE REPORT continued...**

<b>Support of Local Ministries</b>	<b>2011 Budget</b>	<b>Year to Date</b>
Congregational Care & Development Committee	\$1,000.00	\$595.28
Professional Care & Development Committee	\$3,000.00	\$903.02
Regional Partnerships		
Southeast	\$0.00	\$0.00
East	\$0.00	\$0.00
DM West/NW	\$0.00	\$0.00
Southwest	\$5,000.00	\$3,500.00
West	\$0.00	\$0.00
South Central	\$200.00	\$0.00
DM Two Rivers	\$4,500.00	\$1,859.94
Coordinating Council	\$200.00	\$597.01
Worship Task Group	\$75.00	\$0.00
Bills & Overtures	\$50.00	\$0.00
Emergency Contingency	\$500.00	\$0.00
<b>Subtotal</b>	<b>\$14,525.00</b>	<b>\$7,455.25</b>
<b>Office Expense</b>		
Condo dues	\$2,405.00	\$1,800.00
Rent-copier lease	\$4,400.00	\$1,974.47
Office supplies	\$4,000.00	\$3,994.22
Postage	\$3,000.00	\$2,115.02
Telephone & Internet	\$4,000.00	\$3,486.26
Utilities	\$1,500.00	\$1,098.15
Janitorial Services	\$3,000.00	\$2,498.87
New Equipment	\$2,000.00	\$1,888.95
Equipment Maintenance	\$1,500.00	\$800.00
Books & Subscriptions	\$250.00	\$172.00
Office Travel	\$1,000.00	\$218.46
Audit	\$6,800.00	\$6,986.17
Continuing Ed-Support Staff	\$100.00	\$75.00
Church & Staff Appreciation	\$100.00	\$0.00
<b>Subtotal</b>	<b>\$34,055.00</b>	<b>\$27,107.57</b>
<b>Personnel</b>		
General Presbyter Salary	\$69,316.00	\$47,878.72
General Presbyter Benefits	\$21,817.00	\$15,081.76
General Presbyter Prof Expense	\$600.00	\$64.42
General Presbyter Con Ed	\$1,500.00	\$832.50
General Presbyter Travel	\$10,000.00	\$4,438.77
Office Manager Salary	\$33,448.00	\$23,096.80
Office Manager Benefits	\$10,522.00	\$7,275.44
Office Manager FICA	\$2,558.00	\$1,706.98
Communications Director Salary	\$29,056.00	\$20,052.00
Communications Director FICA	\$2,223.00	\$1,533.96
Hunger Action Enabler Salary	\$5,500.00	\$3,666.72
Hunger Action Enabler FICA	\$400.00	\$280.53
Sudanese Ministry RP Salary	\$22,056.00	\$14,903.36
Sudanese Ministry RP Benefits	\$6,892.00	\$6,258.48
Sudanese Ministry RP Con Ed	\$750.00	\$0.00
Sudanese Ministry RP Expenses	\$3,000.00	\$3,288.08
<b>Subtotal</b>	<b>\$219,638.00</b>	<b>\$150,358.52</b>
<b>Total Expenses</b>	<b>\$487,325.40</b>	<b>\$343,571.62</b>



**D – BUDGET AND FINANCE COMMITTEE REPORT continued...****Presbytery of Des Moines****Restricted Funds  
as of September 30, 2011****New Covenant Funds****McCahon Fund**

Annual income to be used for grants for small churches (under 150) for one-time needs. Unused income to be reinvested each year in the trust.	\$35,877.30
---	-------------

**Swan Fund**

Interest earnings used for seminary student's assistance.	\$20,484.88
---	-------------

**Albia Sale**

To be used for the assistance of small churches in the Presbytery.	\$9,155.11
--	------------

**Knox Knolls – Camping Fund**

$\frac{3}{4}$ of interest earnings used for the camping program.	\$178,759.47
$\frac{1}{4}$ of interest earnings used for Presbytery causes.	

**Walther Fund**

To be used for scholarship aid for physically or mentally-challenged youth and/or children in need.	\$18,499.72
---	-------------

**Colfax Fund**

To be used for church development with interest to be placed in Colfax Fund Money Market.	\$20,191.41
---	-------------

**First American Bank – Urbandale****Pastor Emergency Fund Savings**

Short-term loans for pastors.	\$1,345.83
-------------------------------	------------

**Colfax Fund Money Market**

To be used for church development	\$1,528.98
-----------------------------------	------------

**D – BUDGET AND FINANCE COMMITTEE REPORT continued...****Presbytery of Des Moines****Consolidated Statement of Financial Position  
as of September 30, 2011****ASSETS****Current Assets**

	Cash in Bank	\$134,160.95	
1112.01	Savings Account	\$1,345.77	
1114.08	Colfax MM	\$1,528.98	
1117.02	Walther Fund	\$18,499.72	
1122.01	McCahon Fund	\$35,877.30	
1122.02	Knox Knolls Fund	\$178,759.47	
1123.01	Albia Fund	\$9,155.11	
1126.02	Life Inc Char Int-Restricted	\$897.00	
1132.05	Swan Fund	\$20,484.88	
1133.07	Pastors Seminar Fund	\$15,584.72	
1134.08	Colfax Fund	\$20,191.41	
	<b>Total Current Assets</b>		<b>\$436,485.31</b>

**Property and Equipment**

1511.01	Office Equipment	\$29,248.41	
1512.01	Accumulated Depreciation	(\$36,587.63)	
1611.01	Real Estate - Presby Office	\$97,500.00	
1611.02	Real Estate - Land	\$293,875.96	
1621.02	Land Improvements-Road	\$26,567.50	
1622.02	Accumulated Depreciation	(\$21,420.13)	
	<b>Total Property &amp; Equipment</b>		<b>\$389,184.11</b>

**Other Assets**

		\$0.00	
	<b>Total Other Assets</b>		<b>\$0.00</b>

	<b>Total Assets</b>		<b>\$825,669.42</b>
--	---------------------	--	---------------------

**LIABILITIES AND NET ASSETS****Current Liabilities**

2301.02	GA – General Mission	\$20,883.90	
2302.02	GA – Designated Mission	\$790.00	
2303.02	GA – Disaster	\$2,484.66	
2304.02	GA – OGHS	\$2,239.41	
2305.02	GA – Peacemaking	\$33.33	
2306.02	GA – Christmas Joy	\$415.00	
2307.02	GA – Pentecost	\$1,742.42	
2308.02	GA – Theological Fund	\$641.62	
2321.02	Synod – General Mission	\$9,302.85	
2325.02	Synod – Peacemaking	\$3.33	
2342.02	Presbytery Designated	\$6,869.30	
2411.01	Pastor Emergency Fund	\$1,345.77	
2525.02	Sudanese Ministry Resources	\$3,561.71	
2530.02	Sudanese Undesignated-Khad Sud	\$4,949.76	
2535.02	Sudanese Water Project	\$1,302.50	
2540.02	Sudanese Designated	\$2,000.00	
2700.03	Hunger Cents-ability	\$450.35	
2701.03	Peacemaking	\$88.88	
2702.03	Rural Partnership Offering	\$2,052.18	
2703.03	Joining Hands	\$3,797.75	
2705.03	El Sal-Water Filter Project	\$14,256.50	
2706.03	El Sal-Undesignated Funds	\$37,539.71	
2707.03	El Sal-Designated Funds	\$691.10	
2708.03	Companeros	\$250.41	
2709.03	Coffee	(\$2,549.14)	
2712.03	El Salvador Scholarship Fund	\$1,000.00	
2717.02	Two Riv SynSchool Scholarship	\$550.00	
2717.02	Escrow Fund	\$6,722.96	
	<b>Total Current Liabilities</b>		<b>\$123,416.26</b>

**Long-Term Liabilities**

2211.01	Real Estate Note - Synod	0.00	
	<b>Total Long-Term Liabilities</b>		<b>0.00</b>

**Total Liabilities****\$123,416.26****Net Assets**

3910.01	Net Assets - Operating Fund	(\$163,489.85)	
3910.02	Net Assets-Program Fund	\$778,068.95	
3910.03	Net Assets - In & Out Fund	\$5,350.70	
3910.05	Net Assets – Swan Fund	\$18,861.77	
3910.07	Fund Balance - Endowment Fund	\$15,584.72	
3910.08	Net Assets - Colfax Fund	\$24,915.68	
	Surplus/(Deficit)	\$22,961.19	
	<b>Total Net Assets</b>		<b>\$702,253.16</b>
	<b>Total Liabilities &amp; Net Assets</b>		<b>\$825,669.42</b>

## **F – NOMINATING COMMITTEE REPORT**

**November 8, 2011**

The Committee places the following persons in nomination for the offices or positions noted:  
(RE = Ruling Elder; TE = Teaching Elder)

### **PRESBYTERY MODERATOR**

RE Leland Smith (Newton, First)

### **PRESBYTERY VICE MODERATOR**

TE - VACANT

### **LEADERSHIP COUNCIL MODERATOR - 2012**

TE David Endriss (Indianola, Trinity United)

### **CONGREGATIONAL CARE AND DEVELOPMENT COMMITTEE**

#### **MODERATOR – 2012**

TE Sarai Schnucker Rice (at-Large)

#### **CLASS OF 2012**

TE Robert Burnett (HR)

#### **CLASS OF 2014**

TE Sarai Schnucker Rice (at-Large)

RE Joanne Pace (Des Moines, Union Park)

RE Jerry Foley (Johnston, St. Paul)

VACANT

### **PROFESSIONAL CARE AND DEVELOPMENT COMMITTEE**

#### **MODERATOR - 2012**

TE Jim Wallace (Des Moines, Central)

#### **CLASS OF 2012**

RE Polk Davison (Des Moines, Westminster)

#### **CLASS OF 2014**

RE Mary Lou Aspengren (Des Moines, First)

VACANT

### **COMMITTEE ON PREPARATION FOR MINISTRY**

#### **MODERATOR - 2012**

TE Shamaine Chambers King (Windsor Heights, Windsor)

#### **CLASS OF 2014**

TE Ann Johnson (Monroe)

RE Joan Mahaffey (Des Moines, Union Park)

### **BUDGET AND FINANCE COMMITTEE**

#### **MODERATOR - 2012**

VACANT

**CLASS OF 2014**

RE Peggy Sanders (Des Moines, Park Avenue)  
VACANT  
VACANT

**PERSONNEL COMMITTEE**

**MODERATOR - 2012**

TE Jack DePond (Audubon, First)

**CLASS OF 2014**

RE Midge Slater (Des Moines, First)

**STEWARDSHIP AND MISSION INTERPRETATION COMMITTEE**

**MODERATOR - 2012**

RE Sandy Wagener (Ankeny)

**CLASS OF 2014**

TE Claude Jones (Des Moines, Park Avenue)

VACANT

**COMMITTEE ON REPRESENTATION**

**MODERATOR - 2012**

TE Dawn Linder (Des Moines, Highland Park)

**CLASS OF 2014**

RE Cindy Ray (Leon, First)

**SEXUAL MISCONDUCT RESPONSE TEAM**

**MODERATOR - 2012**

RE Roberta Victor (Des Moines, Cottage Grove Avenue)

**CLASS OF 2014**

VACANT

**YOUTH ADVISORY DELEGATE TO SYNOD**

**CLASS OF 2012**

Esther Chol (Windsor Heights, Windsor)

**GENERAL ASSEMBLY COMMISSIONERS**

**Teaching Elders**

Shamaine Chambers King (Windsor Heights, Windsor)  
VACANT

**Ruling Elders**

Leland Smith (Newton, First)  
VACANT

**Alternate Teaching Elders**

VACANT  
VACANT

**Alternate Ruling Elders**

Midge Slater (Des Moines, First)

VACANT

**GENERAL ASSEMBLY YOUNG ADULT ADVISORY DELEGATE**

VACANT

Respectfully Submitted,  
Ray Peters, Moderator

## I – REPORT OF THE STATED CLERK

**November 8, 2011**

I present the following items of information to the Presbytery:

- I-I-14 All reports have been filed with the Synod of Lakes and Prairies and the General Assembly as of this date, and all correspondence received on behalf of the Presbytery has been assigned, referred, or answered.
- I-I-15 I have received the resignation of the Rev. Bruce Giese from the Professional Care and Development Committee, Class of 2012, and have referred this to the Nominating Committee.

I present the following recommendations to the Presbytery for action:

- I-R-8 I have received invitations from the Douglas Avenue Presbyterian Church of Des Moines to host the January 21, 2012 Stated Meeting of the Presbytery, and the First Presbyterian Church of Audubon to host the August 18, 2012 Stated Meeting of the Presbytery. I recommend that we accept these invitations.

With these invitations, we still need host churches for the Tuesday, May 15, 2012 and Tuesday, November 13, 2012 Stated Meetings.

- I-R-9 That the Session Records of the following churches be approved without exception: Centerville, First; Chariton, First; Clive, Heartland; Corning, First; Creston, First; Dexter, First; Earlham, First; Gibson, First; Greenfield, First; Guthrie Center, First; Indianola, Trinity United; Knoxville, First; Leon, First; Newton, First; Newton, United; Ottumwa, East End; Ottumwa, First; Sharpsburg; and White Oak.
- I-R-10 That the Session Records of the following churches be approved with exception: Adair, First; Atlantic, First United; Lenox, United; Lucas, First; Mt. Ayr, United; and Platte Center.

Respectfully Submitted,  
Philip W. Barrett, Stated Clerk